

# eFTI, e-CMR & Digital Customs

*Navigating the Future of Digital Logistics*

Starting shortly • Multi-language session

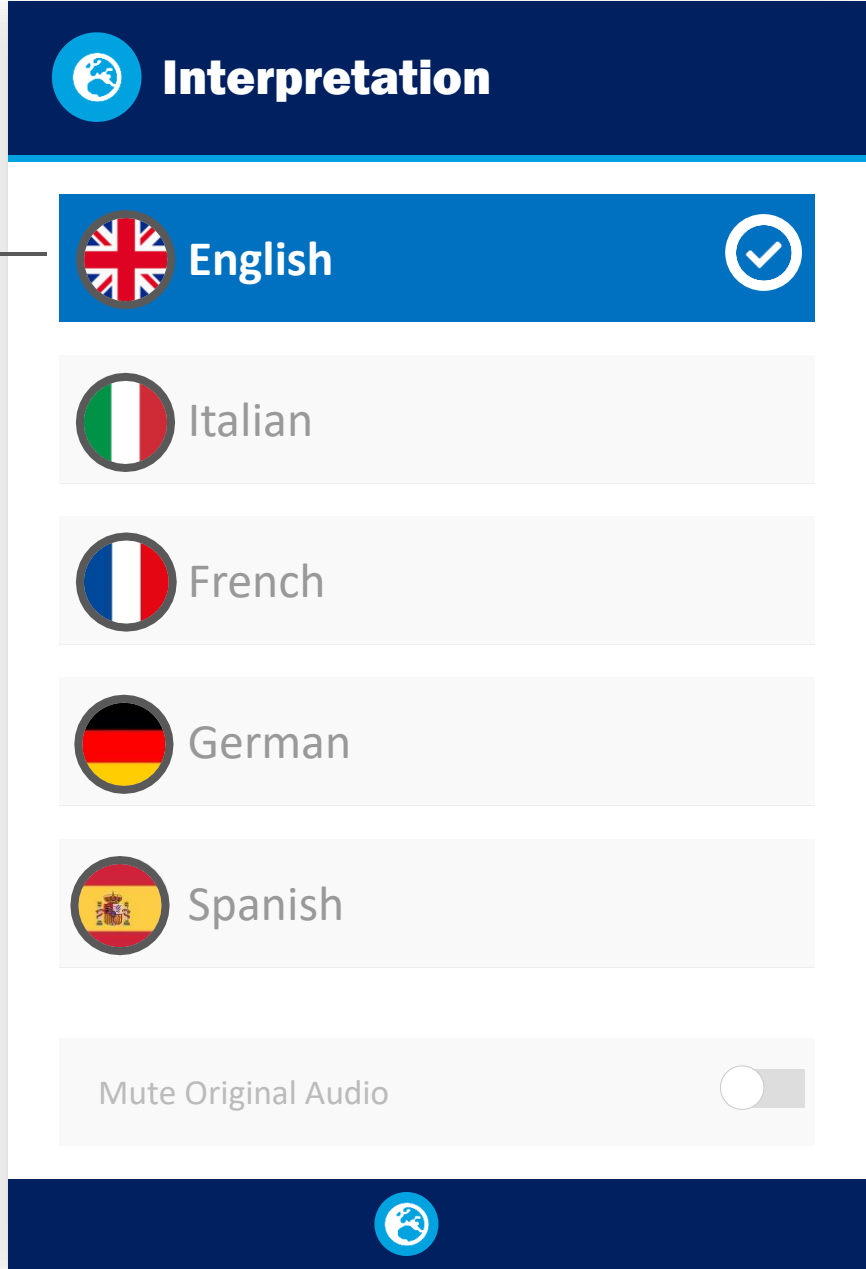
## How to switch language

**1** Click Interpretation in the toolbar

**2** Select your preferred language

**1**

**2**



**Interpretation**

**English** ✓

Italian

French

German

Spanish

Mute Original Audio





DT

DIGITAL  
TECHNOLOGIES

A **Namirial** Company

WEBINAR

# eFTI, e-CMR and Digital Customs: Navigating the Future of Digital Logistics



**Enrico Liverani**  
Digital Technologies



**Language** | You can change the language in the webinar settings



**Q&A** | Submit your questions through the dedicated Q&A section



**Follow-up** | You'll receive the materials and can book a call with an expert

WEBINAR

# eFTI, e-CMR and Digital Customs: Navigating the Future of Digital Logistics



## **Digital Technologies**

About us



## **Regulatory Push**

Context, challenges and opportunities



## **Supply Chain Compliance**

Insights on the impacting regulations



## **AI Automation Journey**

Unlocking new efficiency across Supply Chain



## **AI Automation in Action**

Real use cases, measurable results



## **Q&A**





# **Digital Technologies**

**about us**



# Together, a pan-European Digital Leader

## High-growth and multi-local platform



Signaturit  
Group

**AUTOMATION, TRUST & COMPLIANCE**

**~€260m**

Revenue in FY25

**25+**

Offices globally

**1.400**

Employees globally

**250k+**

Customers

**90+**

Countries



Backed by leading Private Equity investors:



PSG



# OUR CORE.

Hyper  
**AUTOMATION**

Tools and applications to increase speed, profitability, and productivity of both internal and external business processes

Global  
**E-INVOICING**

Tools and applications for the electronic exchange of documents, ensuring compliance with international standards



**AI for Finance**

Innovation hub specialized in automation and processes, bringing together excellence in expertise to develop AI for Finance solutions. We combine AI and advanced technologies to optimize finance and supply chain processes, ensuring efficiency and regulatory compliance on a global scale

Supply Chain  
**FINANCE**

DIGPAY solution to increase financial efficiency by improving liquidity and cash flow

Supply Chain  
**COMPLIANCE**

Tools and strategies designed to ensure compliance with the regulatory convergence of logistics, customs, and ESG requirements, helping companies improve their performance in these areas





# **The Regulatory Push**

## **Evolving regulations**



# From Compliance to Governance

## A continuously expanding regulatory ecosystem

### DIGITAL PRODUCT PASSPORT | DPP

The DPP requires a standardized digital identity for products, including origin, materials, carbon footprint, and lifecycle data.

It ensures full traceability, supports circular economy objectives, and enables regulatory compliance across the entire value chain.

### SUSTAINABILITY | EUDR – CSDDD

EUDR requires full traceability of key raw materials to demonstrate they are not linked to deforestation.

CSDDD introduces environmental and human rights due diligence obligations across the entire value chain.

### FREIGHT & CUSTOMS | eFTI – eCMR – EUCDH

eFTI: digital and harmonized exchange of transport data.

eCMR: fully digital and legally valid electronic consignment note.

EUCDH: defines a unified European Customs Hub and a standardized data model for all customs exchanges.

### REPORTING | CSRD

The CSRD introduces mandatory and standardized sustainability reporting based on ESRS, with data collected from both upstream and downstream partners across the value chain.

### CARBON & TRADE | CBAM

Requires importers to declare embedded emissions in certain goods and purchase the corresponding CBAM certificates.

### DIGITAL IDENTITY & TAX COMPLIANCE | eIDAS 2 – ViDA

eIDAS 2 introduces interoperable digital identities across the EU and trust services to protect and validate business transactions.

ViDA mandates digital VAT reporting and intra-EU e-invoicing through standardized, near real-time data flows.



Procurement

Purchasing

Production

Logistics

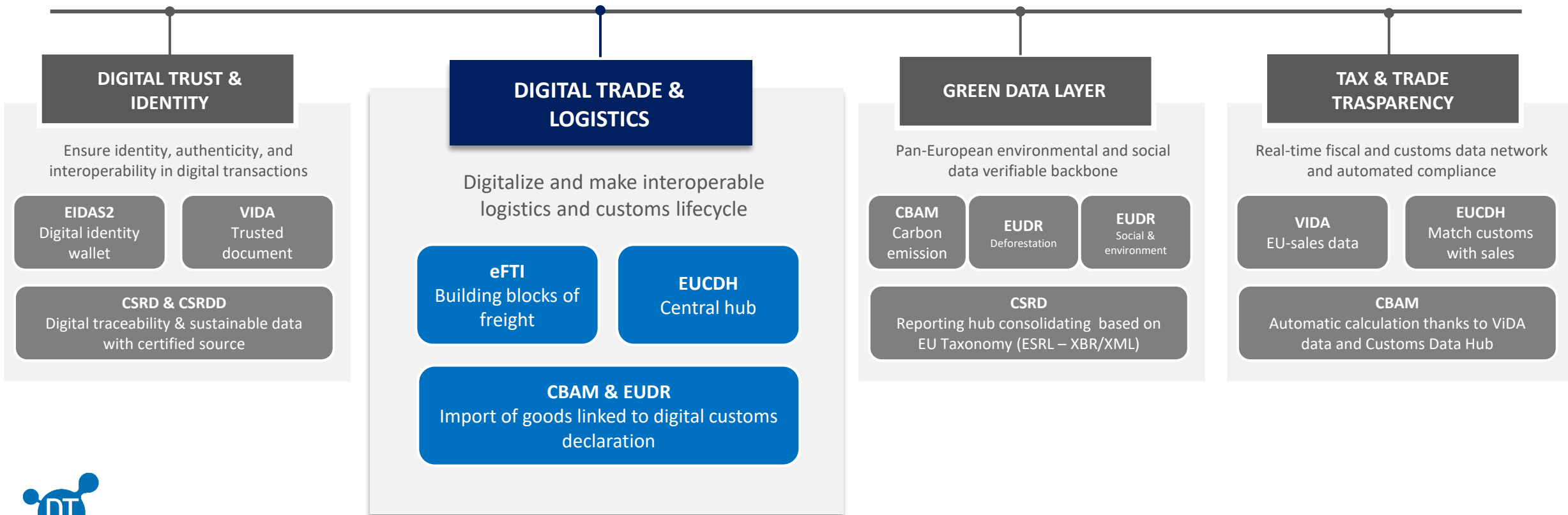
Distribution

# SupplyChain Compliance Convergence

## Are they all tied together?

### A NEW SINGLE EUROPEAN MARKET

There is a single systemic EU design aimed at building a **digital, sustainable and traceable single market**, where **economic, customs, environmental, and identity data** are interoperable, verifiable and reusable.



# Our Focus: 3 Key Regulations

*The regulations shaping the future of digital logistics*



## eCMR

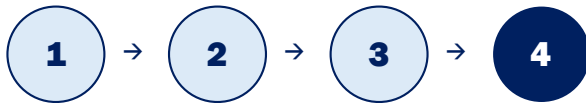
### OBJECTIVE

Replace paper CMR with a fully digital and legally valid version.

### KEY REQUIREMENTS

- Digital creation, signing, and storage of the consignment note
- Certified systems with full audit trail

### PROCESS FLOW



Digital  
Creation

e-Signature  
& Exchange

Certified  
Platform

Authority  
Access



## eFTI

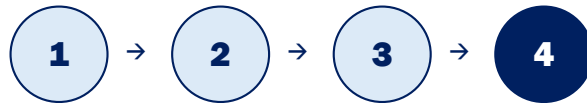
### OBJECTIVE

Digitise and harmonise transport information exchange across the EU.

### KEY REQUIREMENTS

- Use of interoperable and standardised data formats
- Data accessibility for authorities through certified digital platforms

### PROCESS FLOW



Freight  
Data

eFTI  
Platform

Standard  
Exchange

Authority  
Validation



## EU CUSTOMS HUB

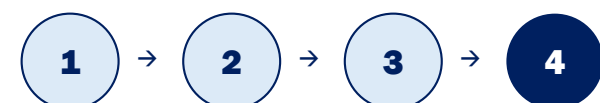
### OBJECTIVE

Establish a unified Data Hub and standard data model for all customs processes.

### KEY REQUIREMENTS

- Harmonised customs data for all declarations
- Integration with the EUCDH data model
- Full interoperability with UN/CEFACT standards

### PROCESS FLOW



National  
Systems

Unified  
Hub

Single  
Portal

Real-time  
Control



# **Supply Chain Compliance**

**Insights on the impacting regulations**



# eCMR

## Regulatory insights

Enables digital replacement of the paper CMR consignment note for international road transport, giving electronic documents the same legal value as paper.

**Key milestones:** In force since 2011 | 39 countries have ratified the eCMR protocol | Full interoperability with eFTI platforms by July 2027 | Industry-wide adoption target by 2029.

### KEY PROVISIONS:

- **Article 1–3:** Equivalent to paper CMR if data is authenticated, integrity guaranteed, and all parties agree.
- **Article 4:** Must include all paper CMR fields: shipper, consignee, goods, origin, destination, weight.
- **Article 5:** E-signatures and timestamps ensure reliability and traceability of operations.
- **Article 6:** Data accessible to competent authorities (customs, police, inspectors).
- **Annex:** Technical rules for security, archiving, and interoperability standards.

### LEGAL EQUIVALENCE

Once the e-CMR protocol is ratified and implemented by a country:

- 1 The electronic document has the same legal value as the paper CMR.
- 2 The parties can exchange and sign transport documents entirely digitally (creation, transfer of custody, delivery confirmation, etc.).
- 3 It is admissible as evidence in court, under the same conditions as the paper version

### KEY ELEMENTS



#### UN/CEFACT Standards

Based on UN/CEFACT standards for message structure and XML schema.



#### Digital Signature

Digital signature compliant with EU eIDAS Regulation (qualified or advanced signature).



#### Storage & Archiving

Storage and archiving must ensure integrity, accessibility, and long-term readability.



#### Unique Identification

Each e-CMR is uniquely identified (unique consignment ID) and may include attachments such as transport licenses, dangerous goods docs, or customs references.

### OBJECTIVE

- Fully digital, paperless freight information exchange.
- Harmonise how authorities receive and validate transport data.
- Reduce cross-border administrative burden and compliance costs.
- Ensure interoperability across customs, transport, and logistics.
- Authorities must accept electronic information if companies choose to provide it.

**Key milestones:** Jan 2025: first implementing acts in force | Dec 2025: remaining implementing specifications adopted | Jan 2026: platforms operational, authorities may accept digital data | 9 July 2027: full mandatory application across all EU Member States.

### SCOPE

Applies to all transport modes (road, rail, inland waterways, air, multimodal) and all situations requiring freight information to public authorities:

- Customs formalities
- Transport of dangerous goods
- Waste shipments
- Cabotage or road control operations
- Environmental and transport compliance check

### eFTI PLATFORMS

- Certified digital systems to store, manage, and share freight transport information electronically.
- Must meet EU interoperability, security, and data protection requirements.
- Certification by accredited conformity assessment bodies.

### eFTI DATA SETS

- Standard data elements and formats based on EU and international standards (UN/CEFACT, WCO Data Model, ISO).
- Ensures semantic and technical interoperability between operators and authorities.

### ACCESS AND GOVERNANCE

- Public authorities access eFTI data through a secure "read-only" interface.
- Operators retain control over their data; must ensure availability, integrity, and authenticity.
- All exchanges are logged for traceability and auditability.

### KEY ELEMENTS

- 1 Interoperability:** Based on common EU data models and reference vocabularies.
- 2 Authentication and access control:** Authorities use digital credentials to access eFTI systems.
- 3 Cybersecurity:** Compliance with EU cybersecurity standards and GDPR.
- 4 Audit trail:** Every access and change must be logged.
- 5 Data availability:** Operators must keep the information available for a defined period for inspection.

# EU CUSTOMS DATA HUB

## Regulatory insights

### SUMMARY

Centralised EU-wide platform replacing 27 national customs systems with a single environment for import, export, and transit data — one-stop data entry for businesses, real-time intelligence for authorities.

**Key milestones: 2026:** March 2026: EU Customs Authority established in Lille | July 2028: Data Hub live for e-commerce | March 2034: phased rollout to all goods | Trust & Check traders scheme replacing AEO.

### OBJECTIVE

- One common data model and single entry point for all EU customs
- Enhance data quality, traceability, and transparency across the supply chain
- Enable real-time trade and logistics data access for authorities
- Reduce admin burden (currently 27 different customs IT systems)
- Strengthen EU borders; connection with CBAM, EUDR, etc.

### SCOPE

- Import, export, and transit declarations
- Pre-arrival data (ICS2) and pre-departure notifications
- Authorisations, guarantees, and simplifications
- Supply-chain data from e-commerce, carriers, and logistics providers
- Integration with EU Single Window (CSW-CERTEX), ICS2, eFTI, and ViDA frameworks

### KEY ELEMENTS

- 1 Centralized EU Database
- 2 Single EU Trader Portal “file once – use many times”
- 3 EU Customs Authority (EUCA) — new decentralised agency based in Lille
- 4 Trust & Check Traders Schema replacing current AEO model
- 5 Data-driven Customs Controls
- 6 Full Interoperability alignment with international standards (UN/CEFACT)
- 7 Progressive Rollout (2028–2034)

### IMPACTS

**For Authorities:** enhanced efficiency, real-time risk profiling and shared intelligence

**For Businesses:** reduces cost and complexity, simplified compliance, earlier clearance decision and improved trade facilitations.

**For EU economy:** stronger border protection, fairer competition and support for green and digital policies integrating sustainability data (CBAM, EUDR, CSDDD). €150 de minimis duty exemption removed — €3 flat duty on low-value parcels from 1 July 2026.

### OBLIGATIONS

- Submit customs data electronically through the EU Trader Portal (or API connections)
- Ensure data quality and consistency, from customs declarations to data-sharing
- Register once with the EU Customs Authority using a single EU Trader Identification (EORI 2.0)
- Grant access to supply-chain data upon request (POs, transports, invoices, certificates).
- Adopt interoperability standards (EUCDM, WCO DM, UN/CEFACT, eFTI, XML/JSON APIs).
- Align internal systems to connect with the Hub directly or via certified service providers.



# **The AI Automation Journey**

## **Unlocking new efficiency across Supply Chain**



# From Regulation to Automation

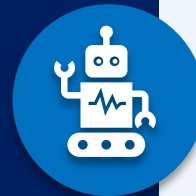
## Turning Regulatory Change into Competitive Advantage

BEFORE

### Without AI-driven Automation

Fragmented, manual, reactive

- Paper-based CMR, POD, delivery notes & other transport documents
- Manual data entry across fragmented systems
- Siloed freight information, no interoperability
- High compliance cost & border delays
- Reactive compliance — always catching up
- No real-time supply chain visibility



AFTER

### With AI-driven Automation

Digital, connected, proactive

- Fully digital, legally equivalent transport documents
- Automated data entry & reconciliation/matching
- Interoperable data shared in real time
- Lower compliance cost, faster border clearance
- Proactive compliance — built-in & always current
- Real-time visibility — foundation for AI Automation

Compliance is no longer the destination — it's the starting point for AI Automation

**Fragmented**

Disconnected systems, no interoperability

**Manual**

Paper-based, error-prone compliance

**100%**

Paper-based, manual process  
→ Fully digital & automated

**Real-time**

Zero supply chain visibility  
→ AI-powered, end-to-end visibility



# AI Agents in Supply Chain

## From traditional to smart Supply Chain

### AI-POWERED SUPPLY CHAIN



AI Agents and IoT sensors optimize the entire Supply Chain — from demand forecasting to customs compliance — reducing costs, improving logistics efficiency, and ensuring real-time end-to-end visibility.





# **AI-Driven Automation in Action**

**Real use cases, measurable results**



1

# Transportation Management System



AI-driven TMS | Leading Food & Beverage Group · National Coverage

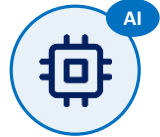
## THE CHALLENGE

The customer needed to digitalize outbound logistics: replacing manual carrier selection, gaining full visibility on transport costs, automating invoice reconciliation with carriers, and building a centralized platform to manage complex tariff contracts — leveraging DT integration with 300+ carriers to eliminate cost overruns, invoice disputes, and operational bottlenecks.

## AI-POWERED PROCESS



SAP order import



Automatic carrier selection



Cost valuation & control



Pre-invoicing & reconciliation



Analytics & statistics

## FINANCE IMPACT

**-80%**

Manual effort on carrier selection, fully automated without team intervention

**>90%**

First-pass cost accuracy on contract-based automated valuation

**+40%**

Invoice reconciliation speed improving carrier relationships

**<4 mo**

ROI payback  
Full ROI payback with TMS capabilities live across all regions

LIVE DEMO

# TMS

Transport Management System

Digital Technologies — A Namirial Company

Automatic posting of delivery notes | Leading Wellness & Fitness Group · International Coverage

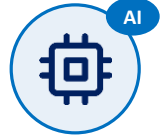
## THE CHALLENGE

The delivery note registration process is manual and time-consuming, with frequent inaccuracies and inconsistencies impacting warehouse operations and downstream ERP. The goal is to automate the process to enable faster and more accurate goods-in accounting.

## AI-POWERED PROCESS



Document acquisition



AI extraction & matching



Data validation & reconciliation



Automatic ERP registration



Continuous improvement

## FINANCE IMPACT

**>90%**

Data extraction accuracy  
AI-powered extraction from delivery notes

**0**

Manual data entry  
Fully eliminated for delivery note registration

**95%**

Auto-match rate  
AI-powered matching of delivery note lines to open purchase orders

**3x**

Faster processing  
Import declarations processed 3x faster than manual

LIVE DEMO



### DIRECT ACCESS

Italy	AIDA 2.0
Spain	AEAT
Poland	PUESC
UK	CDS
Finland	Tulli
Portugal	P. Aduaneiro
Hungary	eVAM
Czech Republic	e-Customs
Romania	AES-RO

### VIA BROKER

France	DELTA IE
Germany	ATLAS
Netherlands	DMS 4.x
Belgium	IDMS
Austria	e-Zoll
Sweden	TDS/TESS
Switzerland	Passar
Norway	TVINN
Denmark	DMS
Ireland	AIS/AES
Greece	ICISnet

● Direct ● Via broker



### IMPORT

- Customs document retrieval**  
Auto-download from customs portals via API/WebService or RPA bots
- AI data extraction**  
OCR + AI-powered extraction of duties, VAT, line items, HS codes
- Electronic customs dossier**  
Automated assembly of all import documents into a single digital file
- ERP posting**  
Auto-generation of accounting entries for import duties, taxes in SAP/ERP
- Status tracking & alerts**  
Real-time monitoring of declaration status, deadlines via dashboard
- Compliant digital archiving**  
Long-term retention of customs documents per regulatory requirements

### EXPORT

- Multi-channel document collection**  
Automated ingestion of invoices, shipping docs from email, folders, ERP
- Automatic matching & validation**  
Cross-check of invoice ↔ export declaration ↔ clearance certificate
- Exception management**  
Automated alerts on mismatches, workflow-driven resolution
- Declaration data preparation**  
XML enrichment and validation for submission to customs authorities
- Clearance status monitoring**  
Automated retrieval of export clearance status and release confirmation
- ERP synchronization**  
Automatic posting of export customs entries to client ERP/accounting

**1 mln+**  
documents managed

**10+**  
customs systems integrated

**400+**  
carriers connected

AI-driven Supplier self-service EDI portal | Leading Fashion Group · International Coverage

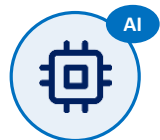
## THE CHALLENGE

Suppliers generated high volumes of EDI documents but many smaller suppliers lacked EDI infrastructure, overloading internal teams with manual data entry, delaying shipments, and creating supply chain blind spots. The company needed a self-service web portal enabling all suppliers to submit and track EDI documents autonomously — eliminating manual bottlenecks and ensuring real-time visibility across the supply chain.

## AI-POWERED PROCESS



SAP IDOC  
to Edifact



Translation  
& validation



Web EDI  
portal



DESADV  
creation



End-to-end  
monitoring

## FINANCE IMPACT

### -80%

Supplier inquiry volume  
resolved autonomously  
without team intervention

### >90%

First-contact resolution  
rate on document exchange  
with non-EDI suppliers

### +40%

Supplier satisfaction  
improving long-term  
partner relationships

### <4 mo

ROI payback  
ROI payback with  
full EDI + Web EDI across regions

5

# AI based product tracking

AI-driven product tracking | Leading Fashion Group · International Coverage

## MINI NFC TAG SENSOR



Size 1: 1.2 x 1.2 x 0.55 mm  
Size 2: 2.0 x 1.25 x 0.55 mm  
Smaller than a grain of rice



### THE CHALLENGE

The customer needed to monitor products across their entire lifecycle — from production through distribution to retail — but relied on fragmented manual processes with no real-time visibility. The company had to build an integrated IoT infrastructure and centralized digital records to ensure end-to-end traceability and regulatory compliance.

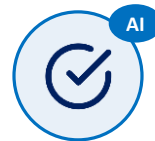
### AI-POWERED PROCESS



IoT sensor deployment



Real-time data collection



AI quality monitoring



Full product tracking, in all production phases, up to retail distribution



Lifecycle Traceability

### FINANCE IMPACT

# 24/7

Product traceability  
End-to-end visibility from raw material to delivery

# 100%

Real-time monitoring  
IoT sensors across all production phases

# AI

Unique product identity  
Scannable digital MiniNFC linked to each product

# DPP

Future evolution  
DPP compliance ready

Future evolution

# Thanks for your attention!

## Any questions?

WHAT'S NEXT?



### AI AGENTS

Download it now!



## Get in touch



**Enrico Liverani**

Digital Technologies – A Namirial Company

**[eliverani@digtechs.com](mailto:eliverani@digtechs.com)**



**[digtechs.com](https://www.digtechs.com)**



**[info@digtechs.com](mailto:info@digtechs.com)**

# Upcoming webinars:

Don't miss our next sessions!

**22**  
APR



## Global E-Invoicing 2026–2030: The Compliance Wave CFOs Must Prepare For

🕒 14:30 CEST 🌐 IT | FR | DE | ES | EN

Regulatory roadmap 2026–2030, deep-dive on France & Germany mandates, key markets update (Slovakia, Spain), and ViDA implications for e-invoicing and e-reporting.

Scan the QR code to register!

**07**  
MAY

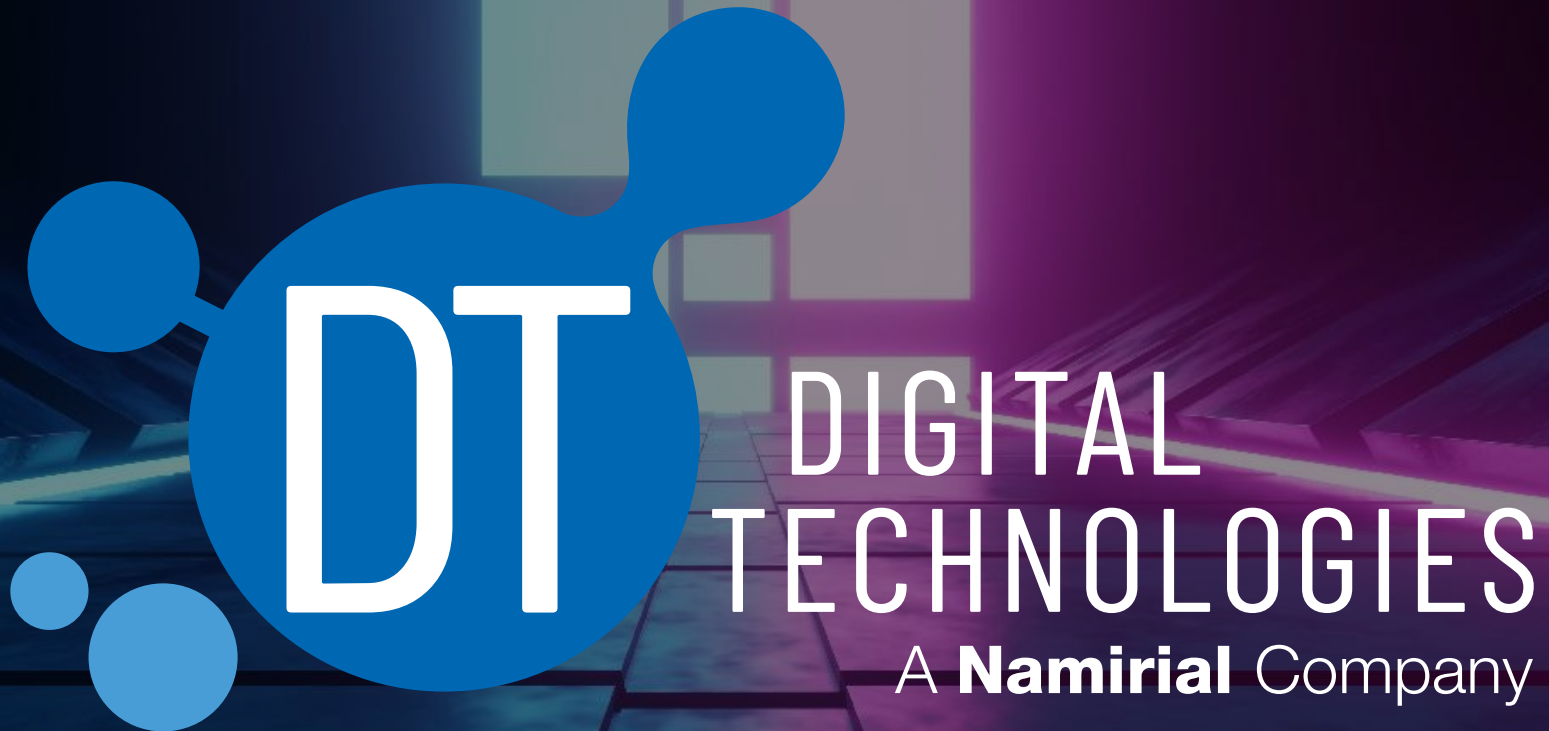


## E-Invoicing Germany 2027: Beyond Compliance, into AI-Powered Automation

🕒 14:30 CEST 🌐 IT | FR | DE | ES | EN

Germany's e-invoicing regulatory timeline, EN 16931 compliance requirements, AI-powered automation of P2P and O2C processes, and live demos with real-world use cases.

Scan the QR code to register!



[digtechs.com](https://digtechs.com) | [info@digtechs.com](mailto:info@digtechs.com)